

Executive Summary with Graphs

Back Office Data
ABC Corp.



Invoice dates from 01/01/2008 to 06/30/2008

Air Charges Summary	Totals	Averages
Transactions - Invoices:	2,022	
Credits:	30	
Total Transactions:	2,052	
Net # of Trips:	1,992	
Air Charges:	\$1,028,659.73	\$516.40
Service Fees:	\$436.98	

Top 5 City Pairs	# of Segs	Amount
Las Vegas<->Los Angeles	346	\$26,273.87
NYC-Kennedy<->Los Angeles	249	\$62,024.78
Los Angeles<->CHI-Ohare	97	\$19,225.93
Dallas-Ft Worth<->Los Angeles	81	\$12,263.66
Hong Kong<->Los Angeles	73	\$128,201.16

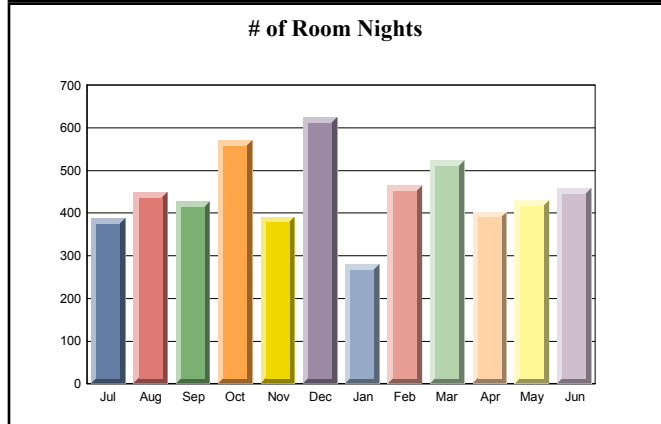
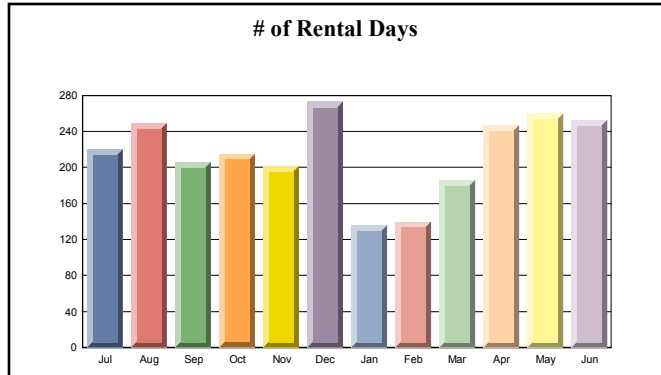
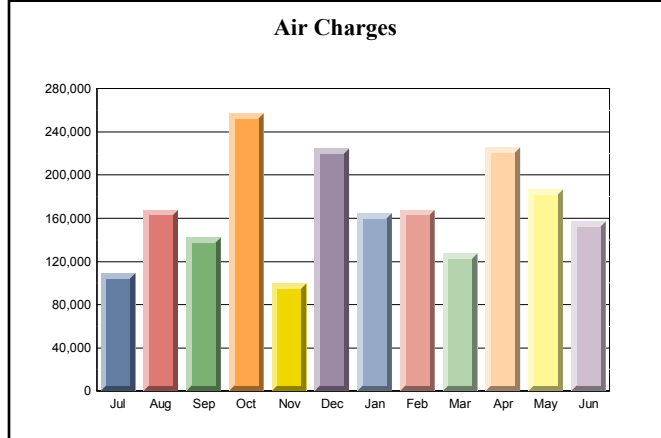
Car Rental Summary	Totals	Averages
# of Cars Rented:	519	
# of Days Rented:	1,222	2.35
Cost (booked rate):	\$51,262.64	\$51.00
Cost per Day:	N/A	\$41.95

Top 5 Car Rental Cities	# of Days	Amount
LOS ANGELES, CA	370	\$11,447.89
PHOENIX, AZ	81	\$2,590.49
SEATTLE, WA	76	\$3,298.97
EL PASO, TX	29	\$1,356.47
DETROIT METRO, MI	26	\$1,648.48

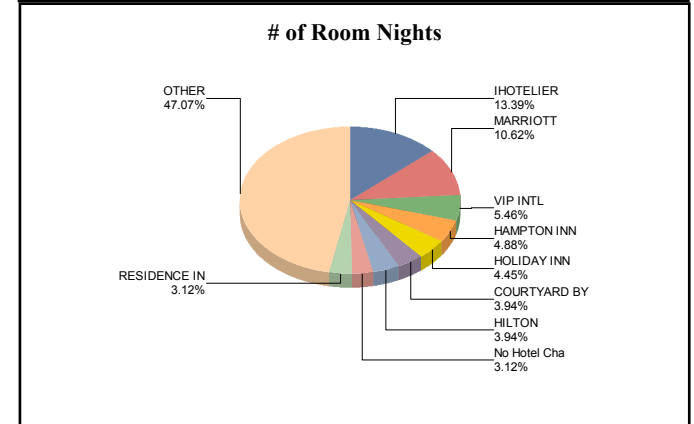
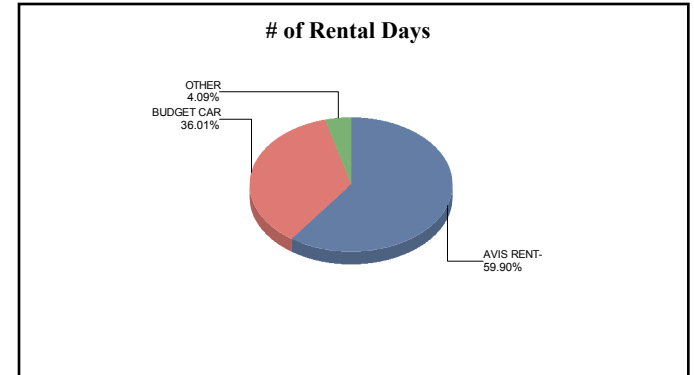
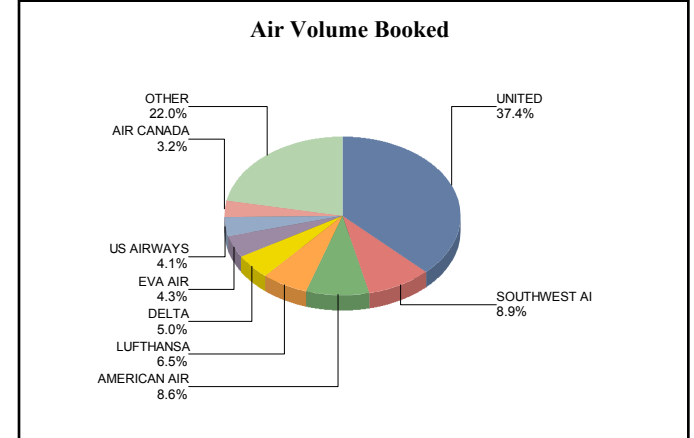
Hotel Bkg Summary	Totals	Averages
# of Bookings:	1,204	
# of Nights:	2,562	2.13
Cost (booked rate):	\$495,773.91	\$195.41
Cost per Night:	N/A	\$193.51

Top 5 Hotel Cities	# of Nights	Amount
LOS ANGELES, CA	799	\$118,878.23
SEATTLE, WA	103	\$15,055.32
PHOENIX, AZ	67	\$7,964.84
NYC-KENNEDY, NY	64	\$20,618.30
LONDON-HEATHROW, UK	58	\$21,722.61

Invoice dates from 07/01/2007 to 06/30/2008



Invoice dates from 01/01/2008 to 06/30/2008



Travel Management Summary

Back Office Data
ABC Corp.

Based on Invoice Date

Report Parameters: Invoice Date BETWEEN 01/01/2008 and 06/30/2008



2008

Jan Feb Mar Apr May Jun Jul Aug Sep Oct Nov Dec YTD

Airlines													
Gross Air Volume	\$193,855	\$175,209	\$151,238	\$230,887	\$194,789	\$166,904	\$0	\$0	\$0	\$0	\$0	\$0	\$1,112,883
Refund Air Volume	(\$29,280)	(\$7,792)	(\$23,961)	(\$4,984)	(\$8,325)	(\$9,881)	\$0	\$0	\$0	\$0	\$0	\$0	(\$84,223)
Net Air Volume	\$164,575	\$167,417	\$127,277	\$225,903	\$186,464	\$157,024	\$0	\$0	\$0	\$0	\$0	\$0	\$1,028,660
Refund Volume %	15.1%	4.5%	15.8%	2.2%	4.3%	5.9%	0%	0%	0%	0%	0%	0%	7.6%
# of Invoices	416	303	279	299	349	376	0	0	0	0	0	0	2,022
# of Refunds	5	7	8	1	4	5	0	0	0	0	0	0	30
Net Transactions	411	296	271	298	345	371	0	0	0	0	0	0	1,992
Refund Trans %	1.2%	2.3%	2.9%	0.3%	1.2%	1.3%	0%	0%	0%	0%	0%	0%	1.5%
Total Mileage	1,226,321	725,609	719,262	992,528	1,039,674	828,387	0	0	0	0	0	0	5,531,781
# Tickets Booked Online	0	0	0	0	0	0	0	0	0	0	0	0	0
Volume Booked Online	\$0	\$0	\$0	\$0	\$0	\$0	\$0	\$0	\$0	\$0	\$0	\$0	\$0
% Tickets Booked Online	0%	0%	0%	0%	0%	0.0%	0%	0%	0%	0%	0%	0%	0%
Average Gross Amt	\$466	\$578	\$542	\$772	\$558	\$444	\$0	\$0	\$0	\$0	\$0	\$0	\$550
Average Refund Amt	(\$5,856)	(\$1,113)	(\$2,995)	(\$4,984)	(\$2,081)	(\$1,976)	\$0	\$0	\$0	\$0	\$0	\$0	(\$2,807)
Average Net Amt	\$400	\$566	\$470	\$758	\$540	\$423	\$0	\$0	\$0	\$0	\$0	\$0	\$516
Average Cost Per Mile	0.13	0.23	0.18	0.23	0.18	0.19	0	0	0	0	0	0	0.19
Int'l Air Volume	\$76,462	\$110,711	\$67,411	\$153,054	\$87,167	\$64,939	\$0	\$0	\$0	\$0	\$0	\$0	\$559,743
Int'l Air Vol %	46.5%	66.1%	53.0%	67.8%	46.8%	41.4%	0%	0%	0%	0%	0%	0%	54.4%
Int'l Air Tickets	73	86	56	61	73	56	0	0	0	0	0	0	405
Int'l Avg Net Amt	\$1,047	\$1,287	\$1,204	\$2,509	\$1,194	\$1,160	\$0	\$0	\$0	\$0	\$0	\$0	\$1,382
Int'l Total Miles	483,904	422,783	342,818	440,630	389,511	297,558	0	0	0	0	0	0	2,377,204
Int'l Cost per Mile	0.16	0.26	0.20	0.35	0.22	0.22	0	0	0	0	0	0	0.24
Domestic Air Volume	\$88,113	\$56,706	\$59,866	\$72,849	\$99,297	\$92,085	\$0	\$0	\$0	\$0	\$0	\$0	\$468,916
Domestic Air Vol %	53.5%	33.9%	47.0%	32.3%	53.3%	58.6%	0%	0%	0%	0%	0%	0%	45.6%
Domestic Air Tickets	338	210	215	237	272	315	0	0	0	0	0	0	1,587
Domestic Avg Net Amt	\$261	\$270	\$278	\$307	\$365	\$292	\$0	\$0	\$0	\$0	\$0	\$0	\$295
Domestic Total Miles	742,417	302,826	376,444	551,898	650,163	530,829	0	0	0	0	0	0	3,154,577
Domestic Cost per Mile	0.12	0.19	0.16	0.13	0.15	0.17	0	0	0	0	0	0	0.15

Impact of Exchanges **

**** Only included once in Total Cost**

# of Exchanges	67	28	32	21	47	36	0	0	0	0	0	0	231
Total Cost to Exchange	\$9,937	\$6,188	\$8,263	\$3,545	\$16,483	\$11,280	\$0	\$0	\$0	\$0	\$0	\$0	\$55,695
Avg Cost to Exchange	\$148	\$221	\$258	\$169	\$351	\$313	\$0	\$0	\$0	\$0	\$0	\$0	\$241
Cost Impact of Exchanges	6.0%	3.7%	6.5%	1.6%	8.8%	7.2%	0%	0%	0%	0%	0%	0%	5.4%

Service Fees

Service Fees	\$52	\$135	\$250	\$0	\$0	\$0	\$0	\$0	\$0	\$0	\$0	\$0	\$437
# of Service Fees	2	3	5	0	0	0	0	0	0	0	0	0	10

Hotel Bookings

Hotel Rooms Booked	126	237	258	211	187	185	0	0	0	0	0	0	1,204
# of Nights	281	465	524	403	430	459	0	0	0	0	0	0	2,562
Hotel Cost	\$49,523	\$93,588	\$108,362	\$84,858	\$80,418	\$79,026	\$0	\$0	\$0	\$0	\$0	\$0	\$495,774
Avg # of Hotel Nights	2.2	2.0	2.0	1.9	2.3	2.5	0	0	0	0	0	0	2.1
Avg Cost per Night	\$176	\$201	\$207	\$211	\$187	\$172	\$0	\$0	\$0	\$0	\$0	\$0	\$194

Travel Management Summary

Back Office Data

ABC Corp.

Based on Invoice Date

Report Parameters: Invoice Date BETWEEN 01/01/2008 and 06/30/2008



2008

Jan Feb Mar Apr May Jun Jul Aug Sep Oct Nov Dec YTD

Car Rentals Booked	Jan	Feb	Mar	Apr	May	Jun	Jul	Aug	Sep	Oct	Nov	Dec	YTD
Cars Booked	53	74	82	104	109	97	0	0	0	0	0	0	519
# of Days	136	140	186	247	260	253	0	0	0	0	0	0	1,222
Car Rental Cost	\$4,776	\$5,212	\$9,016	\$10,386	\$11,352	\$10,519	\$0	\$0	\$0	\$0	\$0	\$0	\$51,263
Avg # of Days	2.6	1.9	2.3	2.4	2.4	2.6	0	0	0	0	0	0	2.4
Avg Cost per Day	\$35	\$37	\$48	\$42	\$44	\$42	\$0	\$0	\$0	\$0	\$0	\$0	\$42
Total Cost	Jan	Feb	Mar	Apr	May	Jun	Jul	Aug	Sep	Oct	Nov	Dec	YTD
Totals	\$218,874	\$266,217	\$244,655	\$321,147	\$278,234	\$246,569	\$0	\$0	\$0	\$0	\$0	\$0	\$1,575,697

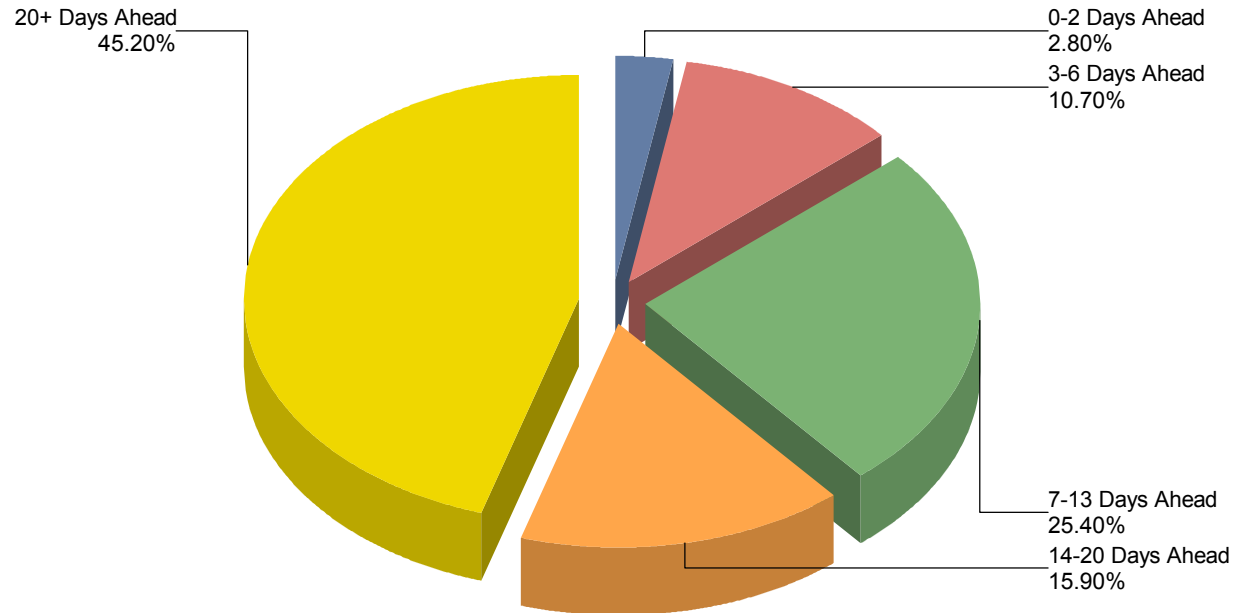
Advance Booking - Air

Back Office Data
ABC Corp.

Invoice dates from 01/01/2008 to 06/30/2008



Report Totals	# of Trips	% of Total	Air Charges	% of Total	Avg Ticket Price
Total # of Trips Purchased 0-2 Days Ahead:	130	6.50%	\$29,312.52	2.80%	\$225.48
Total # of Trips Purchased 3-6 Days Ahead:	193	9.70%	\$109,775.11	10.70%	\$568.78
Total # of Trips Purchased 7-13 Days Ahead:	424	21.30%	\$261,446.59	25.40%	\$616.62
Total # of Trips Purchased 14-20 Days Ahead:	372	18.70%	\$163,308.92	15.90%	\$439.00
Total # of Trips Purchased 20+ Days Ahead:	873	43.80%	\$464,816.59	45.20%	\$532.44
Totals:	1992	100.00 %	1,028,659.73	100.00 %	\$516.40

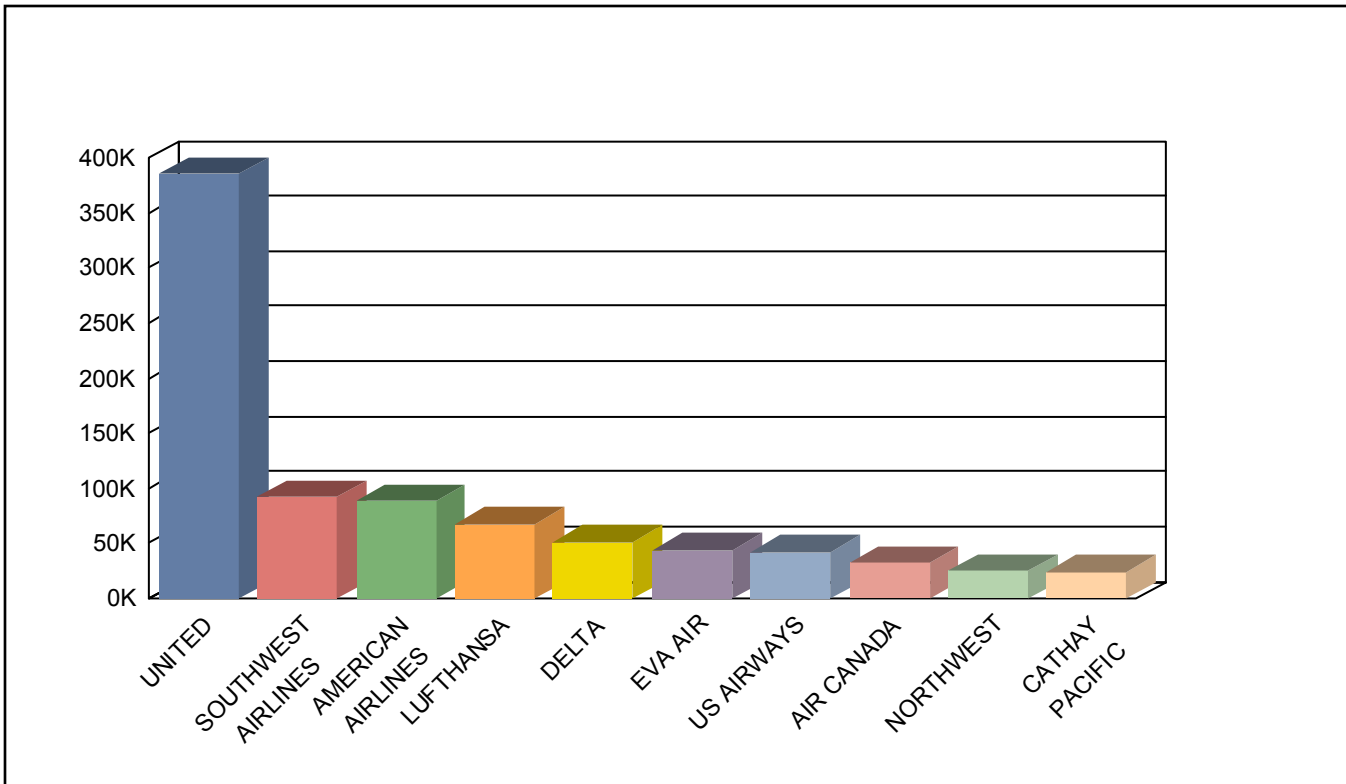


Top 10 Validating Carriers

Back Office Data
ABC Corp.
 Total Volume



<u>Carrier</u>	<u>01/01/2008 - 06/30/2008</u>
UNITED	\$385,098.69
SOUTHWEST AIRLINES	\$92,023.30
AMERICAN AIRLINES	\$88,440.10
LUFTHANSA	\$67,059.80
DELTA	\$51,283.94
EVA AIR	\$44,379.30
US AIRWAYS	\$42,317.06
AIR CANADA	\$32,461.05
NORTHWEST	\$24,531.81
CATHAY PACIFIC	\$24,122.30
Total	\$851,717.35



Validating Carrier Summary

Back Office Data

ABC Corp.

Invoice dates from 01/01/2008 to 06/30/2008



Rank	Validating Carrier	# of Trips	% of Total	Volume Booked	% of Total	Average Cost per Trip
1	UNITED (UA)	586	29.4%	\$385,098.69	37.4%	\$657.17
2	SOUTHWEST AIRLINES (WN)	419	21.0%	\$92,023.30	8.9%	\$219.63
3	AMERICAN AIRLINES (AA)	195	9.8%	\$88,440.10	8.6%	\$453.54
4	LUFTHANSA (LH)	14	0.7%	\$67,059.80	6.5%	\$4,789.99
5	DELTA (DL)	151	7.6%	\$51,283.94	5.0%	\$339.63
6	EVA AIR (BR)	17	0.9%	\$44,379.30	4.3%	\$2,610.55
7	US AIRWAYS (US)	153	7.7%	\$42,317.06	4.1%	\$276.58
8	AIR CANADA (AC)	62	3.1%	\$32,461.05	3.2%	\$523.57
9	NORTHWEST (NW)	29	1.5%	\$24,531.81	2.4%	\$845.92
10	CATHAY PACIFIC (CX)	7	0.4%	\$24,122.30	2.3%	\$3,446.04
11	CONTINENTAL (CO)	64	3.2%	\$23,006.75	2.2%	\$359.48
12	ALASKA AIR (AS)	79	4.0%	\$20,598.21	2.0%	\$260.74
13	KOREAN AIRLINES (KE)	5	0.3%	\$20,025.60	1.9%	\$4,005.12
14	NON-ARC AIR (00)	32	1.6%	\$14,108.64	1.4%	\$440.90
15	JET BLUE (B6)	44	2.2%	\$13,823.48	1.3%	\$314.17
16	ASIANA (OZ)	7	0.4%	\$13,547.30	1.3%	\$1,935.33
17	BRITISH AIRWAYS (BA)	21	1.1%	\$12,132.60	1.2%	\$577.74
18	ALITALIA (AZ)	5	0.3%	\$10,404.40	1.0%	\$2,080.88
19	TAM (JJ)	4	0.2%	\$7,263.60	0.7%	\$1,815.90
20	JAPAN AIR LINES (JL)	4	0.2%	\$4,533.30	0.4%	\$1,133.33
21	COPA (CM)	1	0.1%	\$4,447.30	0.4%	\$4,447.30
22	AIRTRAN (FL)	12	0.6%	\$3,592.88	0.3%	\$299.41
23	MEXICANA (MX)	6	0.3%	\$3,425.36	0.3%	\$570.89
24	WESTJET (WS)	5	0.3%	\$3,203.55	0.3%	\$640.71
25	EMIRATES (EK)	4	0.2%	\$2,944.98	0.3%	\$736.25
Total Carriers Listed:		1,926	96.7%	\$1,008,775.30	98.1%	\$523.77
Total Carriers Not Listed:		66	3.3%	\$19,884.43	1.9%	\$301.28
Report Totals:		1,992	100.0%	\$1,028,659.73	100.0%	\$516.40

Top 25 Hotels Summary

Hotel Properties Bookings

*Back Office Data
ABC Corp.*

Invoice dates from 01/01/2008 to 06/30/2008

Report Parameters: Booked Rate <> 0



Ran	Hotel Property	# of Stays	# of Nights	% of Total	Volume Booked	% of Total	Avg Booked Rate*	Avg Nights per Stay	Avg Cost per Stay	Avg Cost per Night*
1	BELAMAR HOTEL	125	323	12.83%	\$45,715.30	9.22%	\$141.95	2.6	\$365.72	\$141.53
2	MARRIOTT MANHATTAN BEACH	58	222	8.82%	\$38,145.00	7.69%	\$173.21	3.8	\$657.67	\$171.82
3	AYRES HOTEL MANHATTAN BEACH	44	132	5.24%	\$18,084.00	3.65%	\$137.00	3.0	\$411.00	\$137.00
4	RESIDENCE INN MANHATTAN BEACH	8	67	2.66%	\$9,477.00	1.91%	\$144.13	8.4	\$1,184.63	\$141.45
5	THE WESTIN GUANGZHOU	15	40	1.59%	\$10,606.51	2.14%	\$359.15	2.7	\$707.10	\$265.16
6	SHOREHAM HOTEL	22	36	1.43%	\$11,436.30	2.31%	\$305.43	1.6	\$519.83	\$317.68
7	HILTON HOUSTON POST OAK	16	31	1.23%	\$4,429.00	0.89%	\$141.50	1.9	\$276.81	\$142.87
8	FLATOTEL INTERNATIONAL HOTEL N	8	29	1.15%	\$9,521.00	1.92%	\$327.75	3.6	\$1,190.13	\$328.31
9	COURTHOUSE HOTEL KEMPINSKI	12	24	0.95%	\$9,005.81	1.82%	\$385.25	2.0	\$750.48	\$375.24
10	VILLA FLORENCE	13	22	0.87%	\$3,416.20	0.69%	\$155.75	1.7	\$262.78	\$155.28
11	ALA MOANA HOTEL	7	21	0.83%	\$3,069.00	0.62%	\$146.14	3.0	\$438.43	\$146.14
12	HOLIDAY INN EXPRESS	7	21	0.83%	\$2,549.22	0.51%	\$128.57	3.0	\$364.17	\$121.39
13	PARAMOUNT HOTEL A COAST HOTEL	12	21	0.83%	\$2,996.30	0.60%	\$146.98	1.8	\$249.69	\$142.68
14	W HOTEL MEXICO CITY	7	21	0.83%	\$7,251.00	1.46%	\$345.29	3.0	\$1,035.86	\$345.29
15	CAMBON HOTEL	6	18	0.71%	\$6,876.00	1.39%	\$382.00	3.0	\$1,146.00	\$382.00
16	BEST WESTERN	7	17	0.68%	\$1,569.43	0.32%	\$94.36	2.4	\$224.20	\$92.32
17	HILTON GARDEN INN DALLAS MARK	9	17	0.68%	\$1,668.10	0.34%	\$97.67	1.9	\$185.34	\$98.12
18	ROSEN SHINGLE CREEK	3	16	0.64%	\$2,864.00	0.58%	\$182.33	5.3	\$954.67	\$179.00
19	THE WESTIN TOKYO	8	16	0.64%	\$5,618.47	1.13%	\$362.98	2.0	\$702.31	\$351.15
20	HOLIDAY INN EXPRESS PHOENIX I-	2	13	0.52%	\$938.84	0.19%	\$88.49	6.5	\$469.42	\$72.22
21	HOMESTEAD LAS VEGAS	1	13	0.52%	\$844.74	0.17%	\$64.98	13.0	\$844.74	\$64.98
22	HYATT PLACE TEMPE	6	13	0.52%	\$1,287.00	0.26%	\$99.00	2.2	\$214.50	\$99.00
23	CROWNE PLAZA MAASTRICHT	3	12	0.48%	\$2,993.00	0.60%	\$249.42	4.0	\$997.67	\$249.42
24	HACIENDA HOTEL	5	12	0.48%	\$1,188.00	0.24%	\$99.00	2.4	\$237.60	\$99.00
25	RENAISSANCE SAO PAULO	4	12	0.48%	\$3,866.61	0.78%	\$322.22	3.0	\$966.65	\$322.22
Hotel Properties Listed:		408	1169	46.43%	\$205,415.83	41.43%	\$184.72	2.9	\$503.47	\$175.72
Hotel Properties Not Listed:		772	1349	53.57%	\$290,358.08	58.57%	\$201.07	1.7	\$376.11	\$215.24
Report Totals:		1180	2518	100.00%	\$495,773.91	100.00%	\$195.41	2.1	\$420.15	\$196.89

* Only records with valid rates are used in calculating the averages.

Top 10 Car Rentals Rental Companies

Back Office Data

ABC Corp.

Invoice dates from 01/01/2008 to 06/30/2008

Report Parameters: Booked Rate <> 0



Rank	Car Rental Company	# of Rentals	Days Rented	% of Total	Volume Booked	% of Total	Avg Booked Rate*	Avg Days per Rental	Avg Cost per Rental	Avg Cost per Day*
1	AVIS RENT-	337	658	58.18%	\$33,793.45	65.92%	\$54.45	2.0	\$100.28	\$51.36
2	BUDGET CAR	118	427	37.75%	\$14,202.57	27.71%	\$37.67	3.6	\$120.36	\$33.26
3	ALAMO CAR	5	16	1.41%	\$1,090.31	2.13%	\$64.47	3.2	\$218.06	\$68.14
4	HERTZ RENT	3	15	1.33%	\$845.77	1.65%	\$67.90	5.0	\$281.92	\$56.38
5	DOLLAR REN	7	8	0.71%	\$610.45	1.19%	\$73.97	1.1	\$87.21	\$76.31
6	NATIONAL C	3	7	0.62%	\$720.09	1.40%	\$95.42	2.3	\$240.03	\$102.87
Car Rental Companies Listed:		473	1131	100.00%	\$51,262.64	100.00%	\$51.00	2.4	\$108.38	\$45.33
Car Rental Companies Not Listed:		0	0	0.00%	\$0.00	0.00%	\$0.00	.0	\$0.00	\$0.00
Report Totals:		473	1131	100.00%	\$51,262.64	100.00%	\$51.00	2.4	\$108.38	\$45.33

* Only records with valid rates are used in calculating the averages.

Top 25 Travelers Summary

Back Office Data
ABC Corp.

Invoice dates from 01/01/2008 to 06/30/2008



Traveler	Account	# of Trips	Air Volume	# of Car Rental Days	Car Rental Cost	# of Hotel Nights	Hotel Cost	Total Costs	# Days On the Road
VILLALOBOS/ADAN	WR28085	39	\$6,271.83	75	\$2,469.16	67	\$9,420.79	\$18,161.78	168
ZULEGER/GREGORY	WR28085	34	\$8,339.82	15	\$899.01	44	\$6,093.75	\$15,332.58	87
BARNWELL/DANIELLE	WR28085	30	\$5,499.34	40	\$1,372.10	68	\$9,258.52	\$16,129.96	123
STOKES/HARRY	WR28085	30	\$11,725.50	27	\$1,218.17	42	\$7,138.08	\$20,081.75	132
FERLAUTO/MICHAEL	WR28085	29	\$7,639.67	40	\$1,371.27	42	\$6,581.00	\$15,591.94	129
HYSON/MARK	WR28085	27	\$6,140.01	19	\$1,339.55	38	\$4,472.14	\$11,951.70	83
SADIS/NEIL D	WR28085	25	\$7,695.36	39	\$1,514.26	48	\$8,063.29	\$17,272.91	111
CARROLL/JUSTIN	WR28085	24	\$8,840.01	16	\$812.46	22	\$3,996.23	\$13,648.70	62
GIGANTE/ROBERT	WR28085	23	\$7,342.40	2	\$127.00	21	\$3,490.09	\$10,959.49	81
GOLD/MARC	WR28085	22	\$7,301.53	27	\$723.80	31	\$5,646.75	\$13,672.08	128
STERN/GARY R	WR28085	22	\$7,770.32	11	\$361.76	28	\$5,055.34	\$13,187.42	76
WEINBERG/DAVID	WR28085	22	\$46,096.29	0	\$0.00	62	\$30,750.05	\$76,846.34	143
DULA/LARRY	WR28085	21	\$6,679.30	15	\$525.00	20	\$3,878.00	\$11,082.30	120
HREN/BRADLEY J	WR28085	21	\$7,937.89	2	\$127.00	28	\$5,379.93	\$13,444.82	73
MEADE/TINA M	WR28085	20	\$5,697.04	15	\$769.53	9	\$1,268.00	\$7,734.57	32
ROONEY/MARC	WR28085	20	\$5,635.07	36	\$1,359.77	38	\$5,813.55	\$12,808.39	78
GRAHAM/RICK M	WR28085	19	\$5,384.84	9	\$325.12	10	\$1,488.80	\$7,198.76	80
HANSON/STEVEN W	WR28085	19	\$7,792.70	29	\$1,553.71	28	\$3,579.42	\$12,925.83	60
MASON/VICTORIA	WR28085	18	\$3,614.34	16	\$573.77	21	\$3,112.33	\$7,300.44	52
STRODE/DAN	WR28085	18	\$2,753.90	22	\$1,093.40	18	\$1,995.48	\$5,842.78	43
HARTSHORN/JOHN	WR28085	17	\$6,292.02	1	\$84.25	20	\$3,431.05	\$9,807.32	52
NAHIRNY/RUSSELL J	WR28085	17	\$5,633.02	19	\$510.14	34	\$6,803.74	\$12,946.90	80
RUGGERI/JOHN	WR28085	17	\$5,070.11	13	\$755.76	24	\$3,916.20	\$9,742.07	102
ZELINSKY/GEORGE	WR28085	17	\$6,877.83	2	\$89.00	13	\$3,103.90	\$10,070.73	37
BERNSTEIN/HARVEY E	WR28085	15	\$46,183.80	0	\$0.00	65	\$18,005.04	\$64,188.84	151
Report Totals:		566	\$246,213.94	490	\$19,974.99	841	\$161,741.47	\$427,930.40	2,283